

# X2

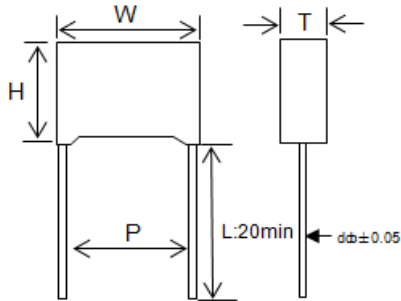
## Metallized Polypropylene Film Capacitor



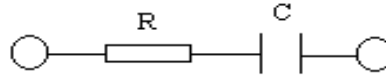
CDCF

Discharge resistance 300VAC Interference suppression

### Outline Drawing



### Electrical Connection



### Features

- Metallized polypropylene structure
- Withstanding overvoltage stressing
- Excellent active and passive flame resistant abilities
- Excellent active noise suppression, absorbing peak and energy, damp

### Specifications

class	X2	
Climatic Category/Passive Flammability Category	40/085/56/B	
Operating temperature	-40°C~85°C	
Rated Voltage	300Vac , 50/60Hz	
Capacitance Range	0.01 ~ 1.0µF, ±20% (M)	
Capacitance Tolerance	±20% (M)	
Voltage Proof	Between Terminals:	4.3U <sub>R</sub> (DC) (5S)
	Between Terminals To Case:	2 100Vac (1min)
Insulation Resistance	$\geq 15\ 000M\Omega$ , $C_R \leq 0.33\mu F$ $\geq 5\ 000s$ , $C_R > 0.33\mu F$ (20°C , 100V , 1min)	
Resistance range/Tolerance	10.0Ω ~ 1000.0Ω , ±30%	$C_{NR} < 50\mu s, 100KHz$ $C_{NR} \geq 50\mu s, 1KHz$

CDCF

STRAIGHT LEAD SPACING (P)

\* Lead space is straight lead non-formed original lead space.

mm	10	15	22.5
Code	100	150	225

LEAD LENGTH FROM SEATING PLANE

mm	10	10	15
Code	100	100	150

LEAD STYLE

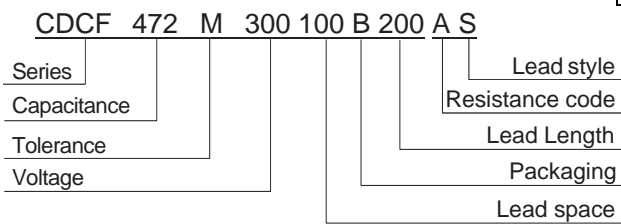
CODE	STYLE
S	Straight
K	Kink-In (Stand off)
F	Form out**
I	Form in**

\*\* For Bulk packaging with formed leads, add an additional 3 digit lead spacing code at end of part number.

■ Dimensions (mm)

300Vac							
Cn (μF)	R (Ω)	W max	H max	T max	P	d	Part number
0.01	10.0 ~ 470.0	18.0	14.0	5.0	14.0	0.6	CDCF103*300140****
0.015	10.0 ~ 470.0	18.0	14.0	5.0	14.0	0.6	CDCF153*300140****
0.022	10.0 ~ 470.0	18.0	14.0	5.0	14.0	0.6	CDCF223*300140****
0.033	10.0 ~ 470.0	18.0	14.0	5.0	14.0	0.6	CDCF333*300140****
0.047	10.0 ~ 470.0	18.0	14.0	5.0	14.0	0.6	CDCF473*300140****
0.068	10.0 ~ 470.0	22.0	14.0	6.0	18.0	0.6	CDCF683*300180****
0.10	10.0 ~ 470.0	22.0	14.0	6.0	18.0	0.6	CDCF104*300180****
0.15	10.0 ~ 220.0	26.5	16.0	7.0	22.0	0.8	CDCF154*300220****
0.20	10.0 ~ 220.0	26.5	16.0	7.0	22.0	0.8	CDCF204*300220****
0.22	10.0 ~ 220.0	26.5	16.0	7.0	22.0	0.8	CDCF224*300220****
0.25	10.0 ~ 120.0	32.0	18.0	9.0	27.0	0.8	CDCF254*300270****
0.30	10.0 ~ 120.0	32.0	18.0	9.0	27.0	0.8	DCF304*300270****
0.33	10.0 ~ 120.0	32.0	18.0	9.0	27.0	0.8	DCF334*300270****
0.47	10.0 ~ 100.0	32.0	20.0	11.0	27.0	0.8	DCF474*300270****

PART NUMBER EXAMPLE



R code:

R	10Ω	22Ω	27Ω	47Ω	51Ω	68Ω	100Ω	120Ω	220Ω	470 Ω	1000 Ω
code	L	N	P	A	B	S	C	D	E	F	H