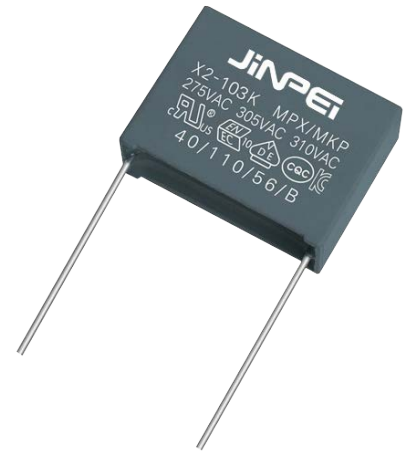
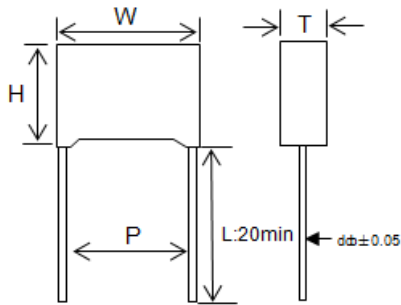


### CDCE

interference suppression capacitor/X2

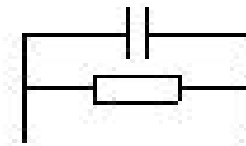
#### ■ Outline Drawing



#### ■ Features

- Internal parallel connection from X2 cap to discharge resistor
- Excellent active and passive flame resistant abilities
- Widely used in across-the-line, interference suppression circuit, etc.

#### ■ Electrical Connection



#### ● Specifications

class	X2		
Climatic Category/Passive Flammability Category	40/110/56/B		
Operating temperature	-40°C~110°C		
Rated Voltage	310VAC ,50/60Hz		
Maximum continuous DC voltage	630Vdc		
Capacitance Range	0.22 ~ 10.0µF		
Capacitance Tolerance	±10% (K), ±20% (M)		
Voltage Proof	Between Terminals:	4.3U <sub>R</sub> (DC) (5S)	
	Between Terminals To Case:	2 120Vac (1min)	
Dissipation Factor	0.22µF ≤ C <sub>R</sub> ≤ 0.47µF	0.47µF < C <sub>R</sub> ≤ 1.0µF	1.0µF < C <sub>R</sub> ≤ 10µF
	≤25×10 <sup>-4</sup> (1kHz,20°C)	≤20×10 <sup>-4</sup> (1kHz,20°C)	≤30×10 <sup>-4</sup> (1kHz,20°C)
	≤20×10 <sup>-4</sup> (10kHz,20°C)	≤40×10 <sup>-4</sup> (10kHz,20°C)	-----
Resistance range/Tolerance	470 kΩ ~ 20 MΩ , ±10%		

## CDCE

### STRAIGHT LEAD SPACING (P)

\* Lead space is straight lead non-formed original lead space.

mm	10	15	22.5
Code	100	150	225

### LEAD LENGTH FROM SEATING PLANE

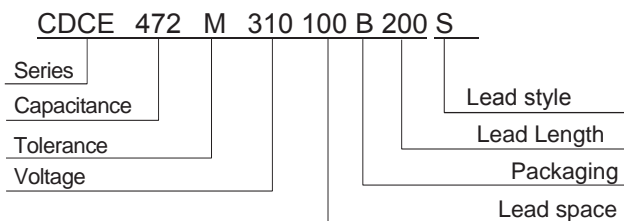
mm	10	10	15
Code	100	100	150

### LEAD STYLE

CODE	STYLE
S	Straight
K	Kink-In (Stand off)
F	Form out**
I	Form in**

\*\* For Bulk packaging with formed leads, add an additional 3 digit lead spacing code at end of part number.

### PART NUMBER EXAMPLE



### ■ Dimensions (mm)

310Vac						
Cn (μF)	W max	H max	T max	P	d	Part number
0.22	26.5	16.0	7.0	22.0	0.8	CDCE224*310220****
0.33	26.5	17.0	8.5	22.0	0.8	CDCE334*310220****
0.47	26.5	18.5	10.0	22.0	0.8	CDCE474*310220****
0.68	26.5	20.0	11.0	22.0	0.8	CDCE684*310220****
1.0	26.5	22.0	12.0	22.0	0.8	CDCE105*310220****
0.47	32.0	18.0	9.0	27.0	0.8	CDCE474*310270****
0.68	32.0	20.0	11.0	27.0	0.8	CDCE684*310270****
1.0	32.0	22.0	13.0	27.0	0.8	CDCE105*310270****
1.5	32.0	22.0	13.0	27.0	0.8	CDCE155*310270****
2.2	32.0	28.0	14.0	27.0	0.8	CDCE225*310270****
3.3	32.0	33.0	18.0	27.0	0.8	CDCE335*310270****
4.7	32.0	37.0	22.0	27.0	0.8	CDCE475*310270****
1.5	41.0	22.0	11.0	37.0	1.0	CDCE155*310370****
2.2	41.0	24.0	13.0	37.0	1.0	CDCE225*310370****
3.3	42.0	28.0	14.0	37.0	1.0	CDCE335*310370****
4.7	41.0	32.0	17.0	37.0	1.0	CDCE475*310370****
6.8	41.0	37.0	22.0	37.0	1.0	CDCE685*310370****
10.0	41.0	41.0	26.0	37.0	1.0	CDCE106*310370****

### R code

R	470KΩ	680KΩ	820KΩ	1MKΩ	1.2MKΩ	1.5MKΩ	2.2MKΩ	3.3MKΩ	4.7MKΩ	6.8MKΩ	10MKΩ	20MKΩ
code	A	B	C	D	E	F	H	L	N	P	S	T